



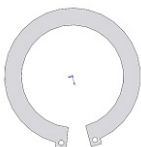


**cism**

Assembly instructions

References

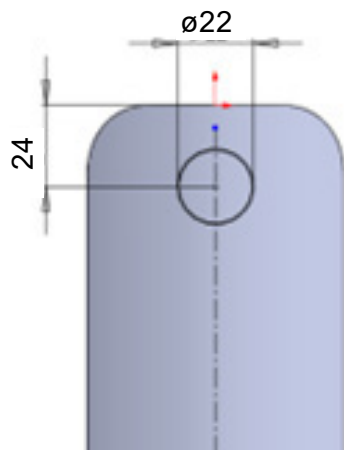
K8125A-K7125A**RANGE STARBOLT**

Nomenclatures

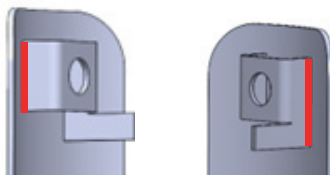
Piece	Support	Cam	Circlip	Screw	Conical spring
Quantity	x1	x1	x1	x1	x1
Visual element					

Assembly steps

1. Follow the drilling plan below



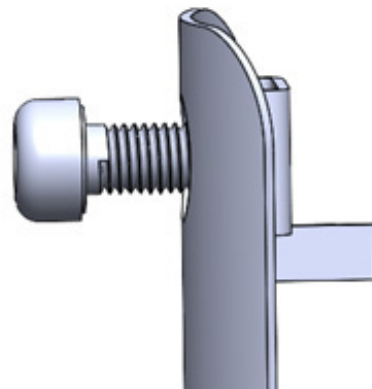
2. Weld the two sides marked in red below. The tab should be facing downwards.



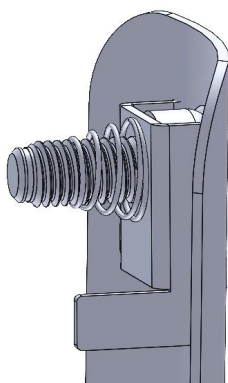
Attention, the two holes must be aligned



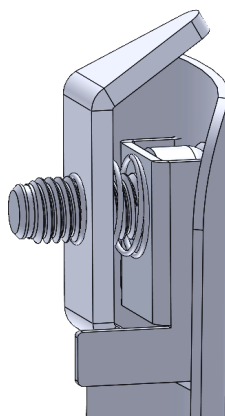
3. Insert the screw from the front



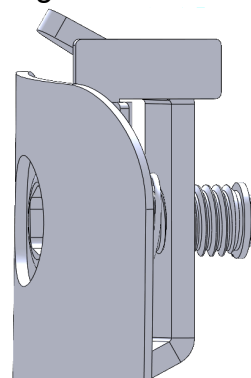
4. Insert the conical spring



5. Screw in the cam.



6. Insert the split pin and then bend both ends to prevent it from being removed



CAUTION : No treatment must be applied to the screw, no galvanizing, no painting, no baking.



84, rue Pierre Estienne - 63000 Clermont-Ferrand
Tél : +33 (0)4 73 74 60 65 - E-mail : contact@cism.fr
RCS Clermont-Ferrand B 450 216 775

www.cism.fr