



Reference

X2C

RANGE PADLOCKS



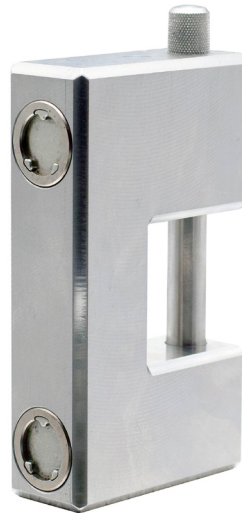
PATENTED MAGNETIC CODING

- Hole-free
- Burglar-proof / Stop Picking
- Protection against theft and vandalism
- Energy source free



SECURITY

- Stainless steel and reinforced steel body
- Single key pattern or keyed alike
- Key system on demand
- Numbered cylinders and keys
- Closure by simple pressure "click and lock"

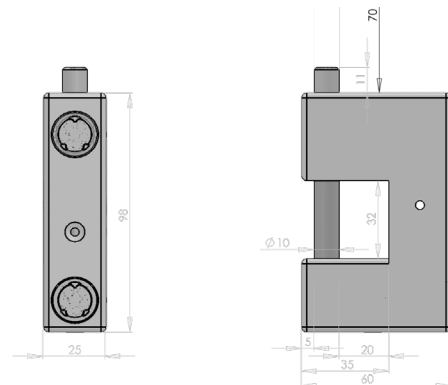


MAGNETIC KEY : CLEO-CE

- Captive key
- Compatible with ATLAS and EPSY products
- 48H key duplication service

CHARACTERISTICS

- Nickel plated finish
- Stainless steel body
- Ø8mm / Ø6mm Cemented Steel Handle
- Anti-drilling pins
- «click and lock» closing
- Two different locks for a double closing



Specific requests, please consult us.

■ ■ French Production

