



Reference

## XP-O

### RANGE PADLOCKS



#### PATENTED MAGNETIC CODING

- Hole-free
- Burglar-proof / Stop Picking
- Protection against theft and vandalism
- Energy source free



#### SECURITY

- Stainless steel and reinforced steel body
- Single key pattern or keyed alike
- Key system on demand
- Numbered cylinders and keys
- Closure by simple pressure "click and lock"

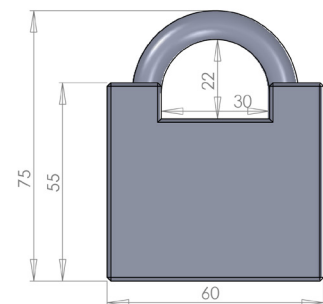
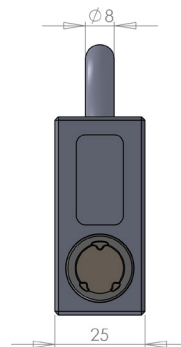


#### MAGNETIC KEY : CLEO-CE

- Captive key
- Compatible with ATLAS and EPSY products
- 48H key duplication service

### CHARACTERISTICS

- Nickel plated finish
- Stainless steel body
- Ø8mm / Ø6mm Cemented Steel Handle
- Anti-drilling pins
- «click and lock» closing



Specific requests, please consult us.

■ ■ French Production

